



WellWall™

WellWall™ manufactured by OHS Resources is a micronized plant cellulose flake material, fiber material and polymer. WellWall™ is a lost circulation material (LCM) that is proven in water-based, synthetic and oil-based drilling fluids. Even in heavy loss depleted zones it works to give back returns and limit mud loss.

WellWall™ is available in easy to carry in 25 lb. multi-ply, lined paper bags.

The best choice for your LCM daily well drilling operations.

For Use with ALL Types of Drilling Fluids: Water Based, Oil Based, or Synthetic Based Fluids.

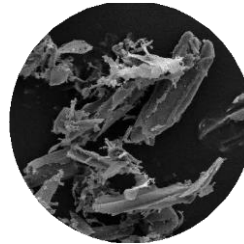
- Forms a Filter Cake Faster than other products.
- Non-Toxic and Safe for your Employees.
- Passes 97% through a 200 mesh screen.
- Mixes Quickly with ALL Types of Drilling Fluids.
- Made from Natural Cellulose Material.
- Lowers Fluid Loss Even in Highly Fractured Shale, Sand or Pre-Salt Formations.

A NON-TOXIC MATERIAL

WellWall™ is made from cellulose that is grown and processed in the United States of America. WellWall™ provides proven loss circulation LCM technology for all types of drilling fluids, including water based, oil based or synthetic based.



WellWall™



Features a unique, fissured, high surface area particle that is widely recognized as the most absorbent natural material on earth (US Navy Study, 1999). This characteristic allows absorption of both water and oil based liquids at a rate that is rivaled by only a small family of expensive, super-absorbent synthetic polymers.



WellWall™ is used as a drilling fluid LCM. WellWall also acts a borehole stabilizer, a lubricating agent, a torque and drag reducer as well as helps prevent differential sticking.



WellWall™ usage saves time and money. Many drilling fluid engineers use WellWall™ mixed at 6 to 8 lbs/bbl. High loss zones may require increasing up to 10 to 12 lbs/bbl. Less WellWall™ is needed to stop fluid loss as compared to most other loss circulation materials (LCM) or combinations.



Disposal: Dispose of according to applicable Federal, State and Local Regulations.



A BETTER PRODUCT FOR DRILLING

WellWall™ works by quickly creating a filter cake on the sides of the borehole to control the loss of the drilling fluids. The pressure of the mud column in the borehole is greater than the surrounding formation pressure and this causes the mud to try and seep out into any opening, pore or fissure. However, a wall forms when the drilling mud contains WellWall™ particles that are slightly larger than the size of the pores or fissure cracks in the formation.



OHS Resources took an engineering view of LCM and the historical issues associated as a design guide to develop a flaked cellulose and polymer formula for the new LCM material.

Our goal is to supply the oil field with the LCM, for drilling operations and seepage control. With our particle size QA controls and unique polymers, we are the engineered solution for most drilling operations.

MANUFACTURED BY:

**OHS Resources Corp.
700 Milam Street
Suite 1300
Houston, Texas 77002
Telephone: 832-871-5111**

WellWall™ particle size distribution passes through a 200 mesh screen and mixes easy with less clumping. It has less material loss on the shaker screen which SAVES MONEY!



Robert Hughes
CEO-OHS Resources

“Our WellWall™ - Loss Circulation Material is the best of LCM products in the oil and gas industry and it forms a filter cake quicker than most LCM products to block fluid loss and seepage. We have proven better performance in the lab and on the rigs compared to all other LCM materials.”